



THE RENOVATED SHELBORNE SOUTH BEACH REVIVES ITS VINTAGE-CHIC LEGACY OF LUXURY, ELEGANCE AND IMPECCABLE SERVICE.

DESTINATION SOUTH BEACH

Shelborne South Beach is situated in the heart of South Beach's Art Deco District. It embodies all that makes South Beach famous including local flavors from our fresh cuisine, live entertainment and a cool tropical beach ambiance. Shelborne South Beach is within walking distance of Miami Beach's main attractions such as Lincoln Road, Ocean Drive, Bass Museum of Art, Miami Beach Convention Center, and New World Symphony. The hotel is just a short ride to Wynwood, Design District, American Airlines Arena, Bal Harbor Mall, Perez Art Museum, Miami International Airport and more.

FUN IN THE SUN

Guests are invited to relax at the iconic oceanfront pool with indoor cabanas, frozen cocktails, and a cutting-edge food menu fit for the entire family. Venture to Shelborne South Beach's private beach club with access to white sandy beaches, sun umbrellas and waterfront cabanas. The Shelborne Beach is located on 18th and Collins and offers a serene environment along with waterfront activities.

FOR THE LOVE OF FOOD & DRINK

Shelborne South Beach turns up the heat with Drawing Room bar, Shelborne Bar & Grill and In-Room Dining. We can customize specialized menus for private groups and events at Shelborne. The hotel also includes The Bistro coffee bar located in the lobby of the hotel for guest convenience.

THE DESIGN COLLECTIVE

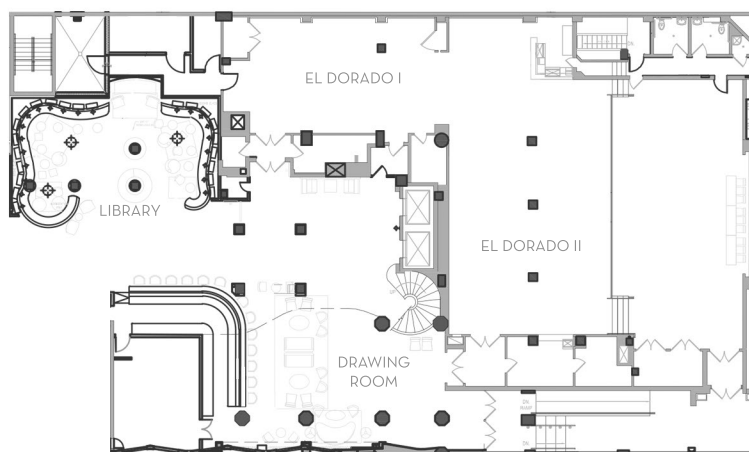
Rising design star Meg Sharpe of Meg Sharpe Interiors masterfully infuses Art Deco details with a playful modern touch in the hotel's public spaces. Her refined design sensibility and savvy perspective are complemented by the work of esteemed Architectural Digest 100 interior designer and author, Richard Mishaan, of Richard Mishaan Design. Mishaan's luxuriously redesigned guest rooms, suites, meeting spaces and ballrooms represent the storied glamour and iconic culture of the 1950s.

MENIN HOSPITALITY COLLECTION

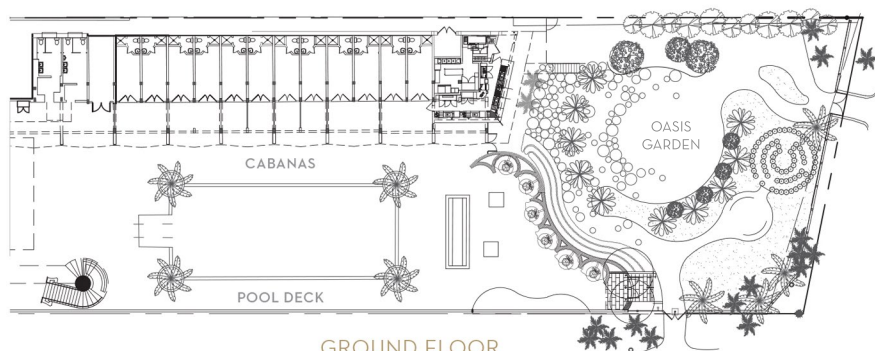
Among the childhood memories of cousins Keith Menin and Jared Galbut is a family chore: tending the front desk of their uncle's Shelborne South Beach. With exposure to the regimen of a hotel operator by way of the family business, the cousins shared a similar vision for their future in the hospitality industry. Realizing the potential of their partnership in this field, the two established Menin Hospitality. Today their eclectic portfolio includes hotels Mondrian South Beach, Shelborne South Beach, Gale South Beach, Bentley South Beach, and Raffaello Chicago; nightlife venues Drumbar Chicago; and dine-in or delivery service Pizza Bar South Beach, Bodega South Beach, Halves & Wholes and Ricky's.



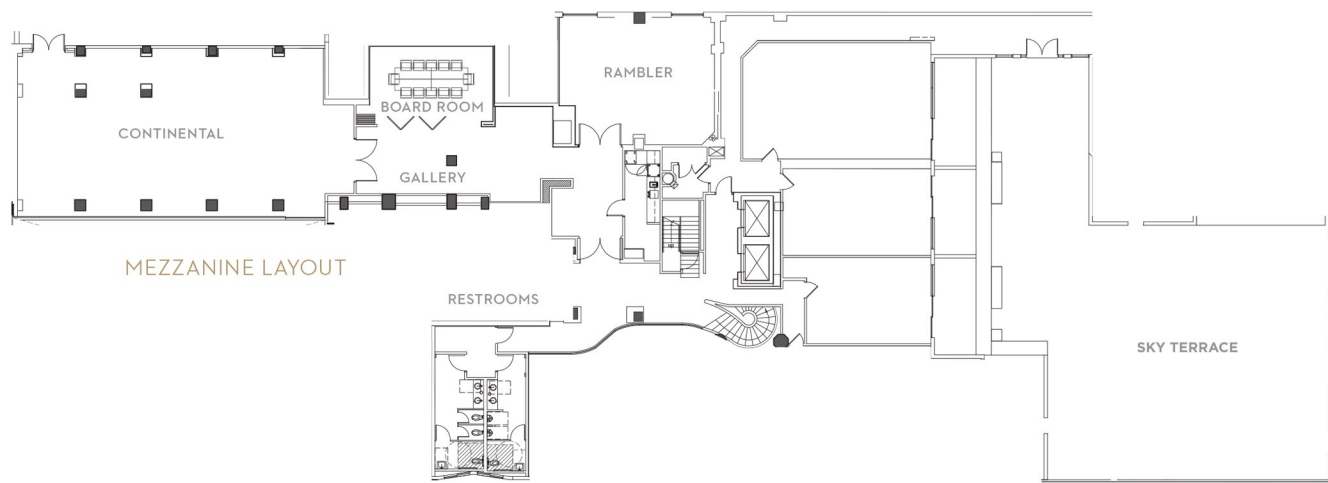
A VIEW FROM ABOVE — EVENT SPACES —



BALLROOMS LAYOUT



GROUND FLOOR



MEZZANINE LAYOUT

CAPACITY CHART	TOTAL SQUARE FT	CEILING HEIGHT	BANQUET ROUNDS	CLASSROOM	CONFERENCE	HOLLOW SQUARE	RECEPTION	THEATER	U-SHAPE
GRAND ELDORADO BALLROOM	4388	10'	240	—	—	—	360	—	—
ELDORADO I	899	10'	70	35	28	24	60	100	25
ELDORADO II	3489	10'	210	120	90	84	300	350	36
CONTINENTAL	1916	9.6'	130	100	46	54	140	180	48
RAMBLER	689	9'	60	45	22	36	60	100	26
BOARDROOM	405	8'	—	—	16	—	—	—	—
THE GALLERY (PRE-FUNCTION SPACE)	724	10'	—	—	—	—	50	—	—
POOL DECK*	13,249	—	—	—	—	—	1100	—	—
OASIS*	5,119	—	140	—	—	—	300	160	—
SKY TERRACE*	3,722	—	150	—	—	—	200	240	—
LIBRARY	—	—	—	—	—	—	60	—	—
DRAWING ROOM	—	—	—	—	—	—	120	—	—

*Flexible Outdoor Space